

SAFEPLEX, INC.

CLIENT-DRIVEN

INTEGRATOR



**THE LOGICAL SELECTION
FOR YOUR SYSTEM
INTEGRATION**

SafePlex ... BACKGROUND

HISTORY

Since founded in 1995, SafePlex has established a reputation as being a worldwide supplier of logic system. Large systems with thirty-two cabinet of logic controllers, marshalling and HMIs to small wall mounted HIPPS systems are only a small part of the 600 plus systems completed by SafePlex.

Founded by Dr. Lawrence Beckman, in 1995 with the help of two senior member of the logic systems committee, SafePlex was instantaneously known by the joint reputation of its senior management team. With over fifty man years of logic systems experience within the management team, the experience base was increased and widened with senior engineers having broad experience in PLC and DCS process safety applications. Dr. Beckman has authored many technical papers in several technical and trade magazines, and is a TUV certified Functional Safety Expert.

WHY SELECT SAFEPLEX FOR YOUR PROJECT?

Experience! Keeping abreast of industrial standards is a full time job. The major standards that guide and regulate the logic systems market such as API 14c, NFPA 72, NFPA 85, ANSI/ISA 84.01, IEC 61508, IEC 61511, NFPA 496, etc. have changed over fifteen times in the last ten years alone. Because SPSI has the depth of standard history, the broad design experience, and because SPSI is involved with the standards committees, SafePlex will guide their client's system designs to be compliance for years to come.

Experience! Being a dedicated logic systems integrator, SafePlex will use its wealth of experience to save your corporation's wealth. SafePlex's experience gives their clients an integrator who works with their clients as a consultant. Because of this consultant-like relationship, upfront engineering mistakes are avoided and thereby lower the cost of the project. Today with the staffing being right sized for daily operations, projects can create staffing burdens. Being able to involve a corporation like SafePlex with its experiences, project burdens can be lighten without adding risk. In fact, SafePlex's experience will reduce your project risk, maintain project schedule, and design the "best-fit" solution --- which all adds up to \$\$\$\$.

SafePlex SERVICES

PRE - AWARD SERVICES

- *PROCESS HAZARD STUDY SUPPORT*
- *SIL or SIF DESIGN NORMS*
- *SIL or SIF CALCULATIONS*
- *GENERAL ARCHITECTURE DESIGNS*
- *BEST FIT RECOMMENDATIONS*
- *SPECIFICATIONS*

TERRA NOVA



MEDUSA
DEVIL'S TOWER
FRONT RUNNER
PDVSA (24)
COLUMBIA (2)



DESIGN & FABRICATIONS SERVICES

- *GENERAL SYSTEM INTEGRATION Sys.*
- *PID CONTROL and/or LOGIC DESIGN*
- *DATABASE MANAGEMENT*
- *SYSTEM STAGING*
- *AUTOCAD*
- *CUSTOM CABINTRY (e.g. Stainless Steel)*

FIELD SUPPORT SERVICES

- *INSTALLATION SUPPORT (Supervision, Power Up)*
- *LOOP COMMISSIONING (Field Wiring Testing)*
- *FUNCTIONAL CHECKOUT (Dry Runs of Logic)*
- *STARTUP SUPPORT (Operations & Training Support)*
- *ON-SITE REDESIGN SUPPORT (Control & Logic)*
- *AS-BUILT DOCUMENTATION (Hardware & Programs)*
- *MAINTENANCE & UPGRADES*



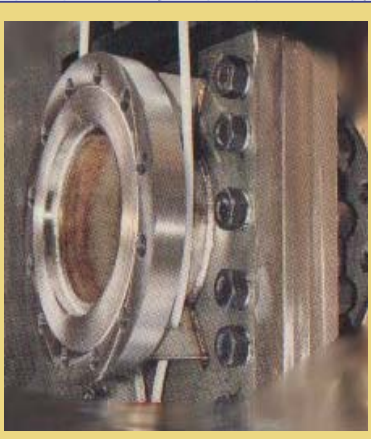
SafePlex PRODUCTS

ESD, F&G, BMS SYSTEMS

SIL-dTect 2600

- SIL 2 RATED
- NFPA 72 APPROVED
- DEDICATED F&G HMI
- DISTRIBUTED (Zone Based) ARCHITECTURE

SIL VALVE-3

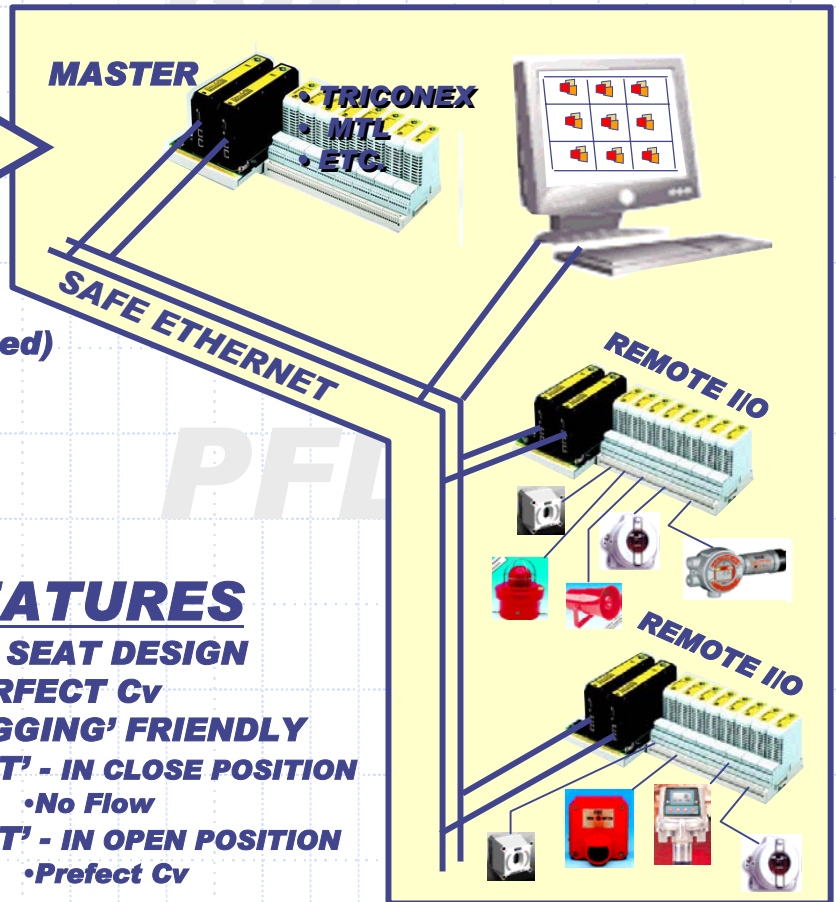


FEATURES

- NO SEAT DESIGN
- PERFECT Cv
- 'PIGGING' FRIENDLY
- 'PST' - IN CLOSE POSITION
 - No Flow
- 'PST' - IN OPEN POSITION
 - Perfect Cv

FEATURES

- SOV DESIGN - 2004D
- TUV SIL 3 APPROVED
- HIGH AVAILABILITY
- TESTING - REMOTE, MANUAL & AUTO
- AUTO 'PST' TUNING TO VALVE
- SOV ON-LINE MAINTENANCE
- 24 VDC @ < 12 WATTS



SIL STROKE-3



PST - Partial Stroke Testing

SafePlex INTEGRATION

CLIENT-DRIVEN AUTOMATION SYSTEM INTEGRATOR

Why debate with the DSC manufacturer over the “best fit” technology for all aspects of your automation needs? Dedicated manufacturers will always promote their technologies over the “best fit” technologies. Why have the headaches of being told by these vendors that you cannot have what is “best” – instead you must use what they provide?

Client-Driven – SafePlex Systems, Inc. is the perfect solution for obtaining the best value for your capital budget. As an **client-driven** automation system integrator, we are committed to providing solutions that utilize the “best-fit technology” and/or your corporation’s preferred equipment.

SafePlex – Since 1995 SafePlex has been integrating automation systems. The scope of these systems have ranged from 30 to 3,000 I/O points. SafePlex specializes in SIL rated applications for ESD, F&G and BMS. But with our extensive expertise and experienced personnel, SafePlex can also provide integration services for PLC and DCS systems.



Maintainability – Availability is critical to the lifecycle ownership cost. To that point, maintainability does matter. As shown in the photos, SafePlex’s assembly work is excellent. The cabinet layout is logical, the cables are labeled, terminations are grouped based upon their types, and documentation is simple and easy to understand.

Staging – SafePlex stages the system for its clients by using I/O test panels during the FAT. Each loop is tested and noted as passed or failed. Punch lists are maintained and signed off only when the client is satisfied. SafePlex Systems, Inc. is an **client-driven** integrator with 100% customer satisfaction record.

EXPERIENCE HISTORY

- 30 YEARS OF TRICONEX
- 5 YEARS OF TRIPLEX
- 10 YEARS OF ALLEN BRADLEY
- and now – GE FANUC (MTL)

SafePlex SUPPORT

LOCATION
at



TANNER BUSINESS PARK
BELTWAY-8 & TANNER

9,600 SQUARE FEET ---- TOTAL
•7,400 SQUARE FEET ---- STAGING

15 EMPLOYEES

- 2 PROJECT MANAGERS
- 4 PROJECT ENGINEERS
- 4 ASSEMBLY TECHS
- 5 SUPPORT

MAINTENANCE SUPPORT

- EMERGENCY SUPPORT
- SCHEDULED SUPPORT
- MAINTENANCE CONTRACT SUPPORT
- PLANT TURN AROUND SUPPORT

TESTIMONIES

CHEMICAL COMPANY

SafePlex Systems engineers' knowledge of the ISA S84 safety standard, guided us into a SIS design that will be compliant for the lifecycle of the process.

OFFSHORE EPC

SafePlex Systems coached us into a design of the Fire & Gas and Emergency Shutdown systems that saved us nearly \$80,000.00 in installation cost. Additionally, they work with us to achieve Coast Guard approvals and made the alterations necessary to receive those approvals.

CHEMICAL COMPANY

We had very limited floor space for our nearly four hundred I/O ESD system. SafePlex Systems' engineers worked with us to reduce the system footprint by designing an unique remote termination system.

GAS PLANT

Our plant is expansive. To pull I/O cables from these remote locations would of cause the project to be cancel. We needed an ESD system that would be housed in the field, under pipe racks, and elevated to prevent flooding. SafePlex designed --- racks, stainless steel cabinets, rain shields, and networking --- that met our demanding needs.

EAST COAST REFINERY

Like every other refinery, we have numerous small ESD applications. To avoid high installation cost, we needed to install the equipment near the furnaces, FCC Unit, etc. That also required the systems to be design to meet Class 1, Division 2-qualifications. SafePlex's approach to the 120 VAC / 24 VDC power supplies housing, allowed the ESD systems to be installed in the field without using Z purging.

OFFSHORE HIPS

With 2oo3 voting of the pressure transmitters, 2% deviation monitoring between transmitters, degrading to 1oo2 if a transmitter failed, local pushbuttons for testing and opening --- we needed a system provider with experience. With every stated need, SafePlex had a field proven solution to address it. What was amazing --- they did it in a hardwired system!

SAFEPLEX

SYSTEMS and SOLUTIONS

SIL DETERMINATION SERVICES

HIPPS

HIPS

BMS

ESD

F&G

**THE LOGICAL SELECTION
FOR YOUR SYSTEM
INTEGRATION**