


# SIL-dTect 2600

**NFPA  
72  
COMPLIANT**



NFPA



**TUV  
CERTIFIED  
SIL 2**



TÜV Rheinland

# FIRE & GAS SYSTEM

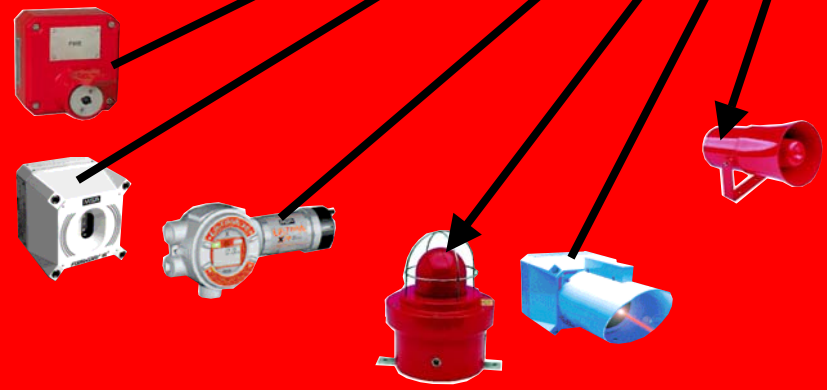
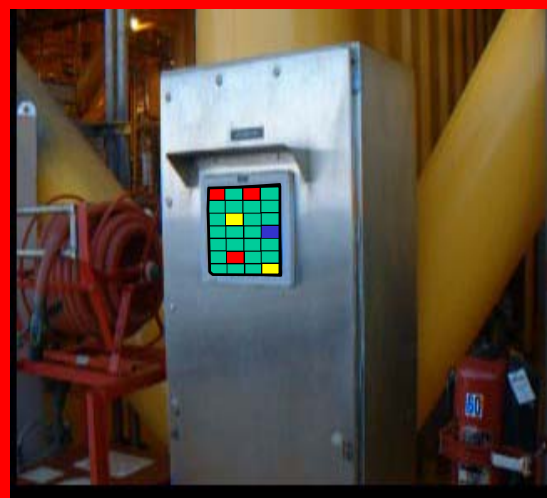
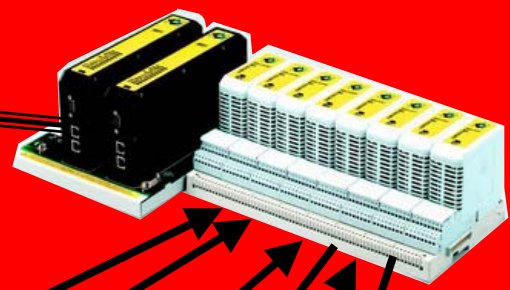
# SIL-dTect 2600

## *SIL-dTect 2600*



# SIL-dTect 2600

# SIL-dTect 2600



## **FIRE PANEL FEATURES**

- **STAND ALONE DESIGN**
- **NEMA 4x DESIGN**
- **CLASS 1, DIVISION II**
- **SUPERVISED I/O WIRING**
- **NFPA 72 COMPLIANT**
- **LOCAL HMI**

# SIL-dTect 2600

## SIL-dTect 2600



### SIL-dTect Vue FEATURES

#### • PLANT OVERVIEW DISPLAY - 6 COLORS

- ALARM / HIGH LEL 
- LOW LEL 
- DEVICE FAILURE 
- CALIBRATION 
- OUT OF SERVICE 
- NORMAL 



# SIL-dTect 2600

# SIL-dTect 2600

*ZONE-n*

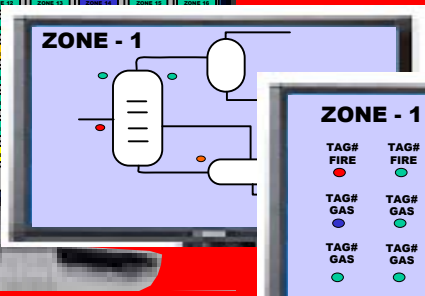
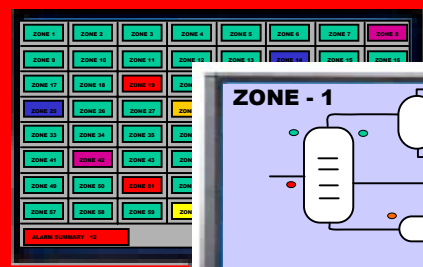


SIL-dTect Vue



*ZONE-1*

## HMI DISPLAYS

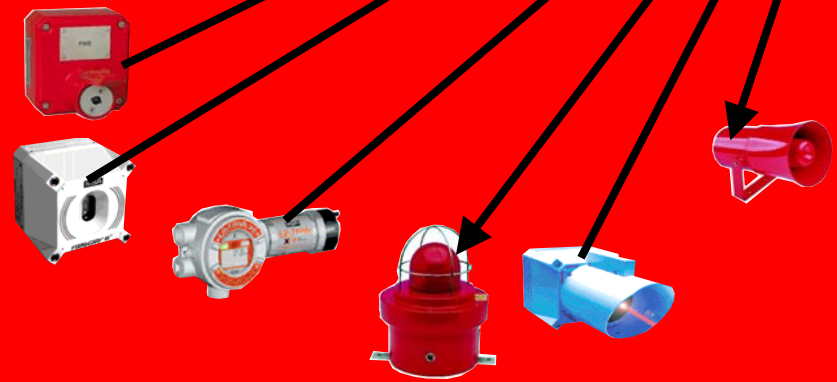
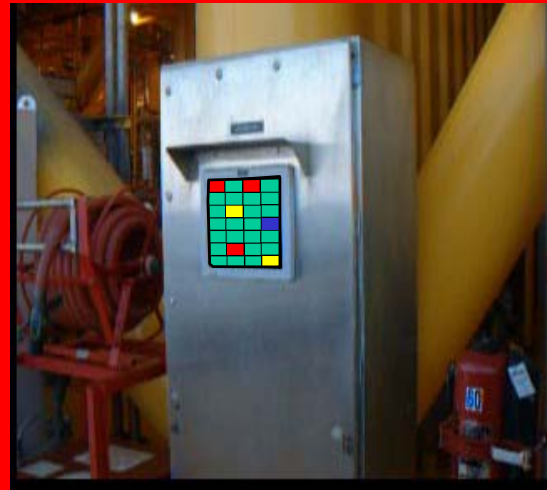
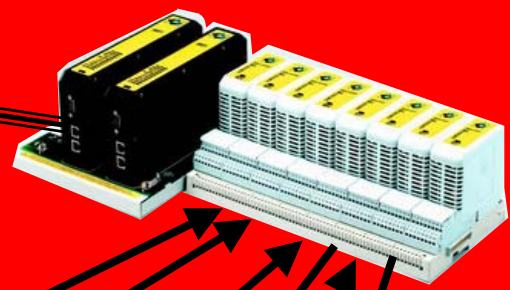


ALARM SUMMARY		
GD1022A	FCC HEATER FUEL GAS	LOW % LEL
GD1022A	FCC HEATER FUEL GAS	HIGH LEL
GD1022B	FCC HEATER FUEL GAS	OKAY
GD1022B	FCC HEATER FUEL GAS	LOW % LEL
GD1022B	FCC HEATER FUEL GAS	HIGH LEL
GD1022B	FCC HEATER FUEL GAS	OKAY
FD1022A	FCC HEATER LEFT BNR #1	TRIP
FD1022B	FCC HEATER LEFT BNR #2	TRIP
GD1022A	FCC HEATER FUEL GAS	OKAY
GD1022B	FCC HEATER FUEL GAS	LOW % LEL
GD1022B	FCC HEATER FUEL GAS	HIGH LEL
FD1022B	FCC REBOILER BNR #1	OKAY



# SIL-dTect 2600

# SIL-dTect 2600

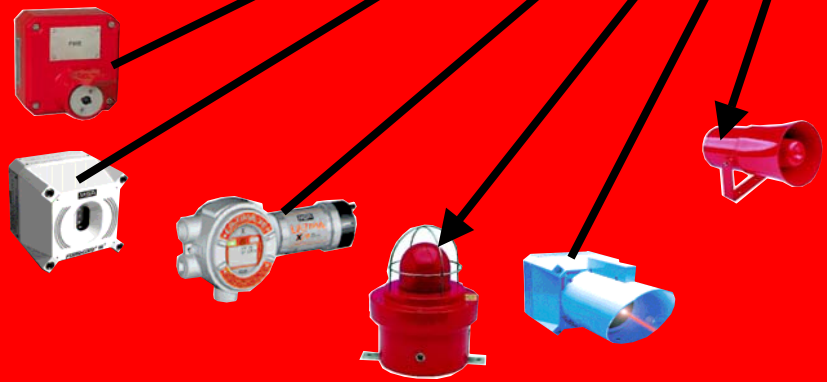
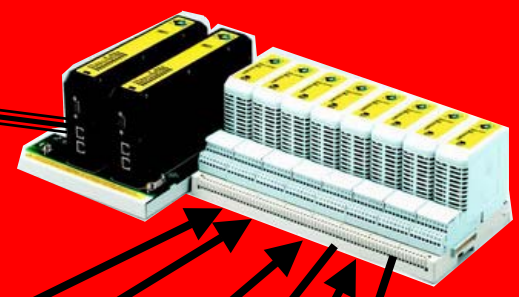


## SIL 2 MTL CONTROLLER

- > REDUNDANT CPUs (Optional)
- > CLASS I, DIV 2
- > -40 To 70° C
- > ISA CORROSION RATING - G3
  - > CONFORMAL COATING
- > AUTO RE-ED CPUs
  - > POP-n-SWAP

# SIL-dTect 2600

## SIL-dTect 2600



### **SENSOR DIAGNOSTICS**

- **CONTROLLER TESTING FOR:**
  - **SENSOR FAILURE**
  - **SENSOR IN CALIBRATION**
  - **SENSOR OUT OF SERVICE**
  - **BROKEN FIELD WIRES**

**SPSI**

# **SIL-dTect 2600**

**FOR MORE DETAILS CONTACT**

**SAFEPLEX SYSTEMS, INC.**

**TEL: 713.983.8410**

**EMAIL: [sales@safeplexsystems.com](mailto:sales@safeplexsystems.com)**

**NFPA 72 COMPLIANT & SIL 2 RATED**

**SPSI**