

## **BASE DESIGNS**

- AIR TO OPEN with PST
- AIR TO OPEN without PST
- Hydraulic or Pneumatic
- AIR TO CLOSE ESDV
- CONTROL VALVES

### **UNIVERSAL 2004D SOV DESIGN**



# **RELIABILITY MEANS**

## **HIGH OPERATIONAL AVAILABILITY**

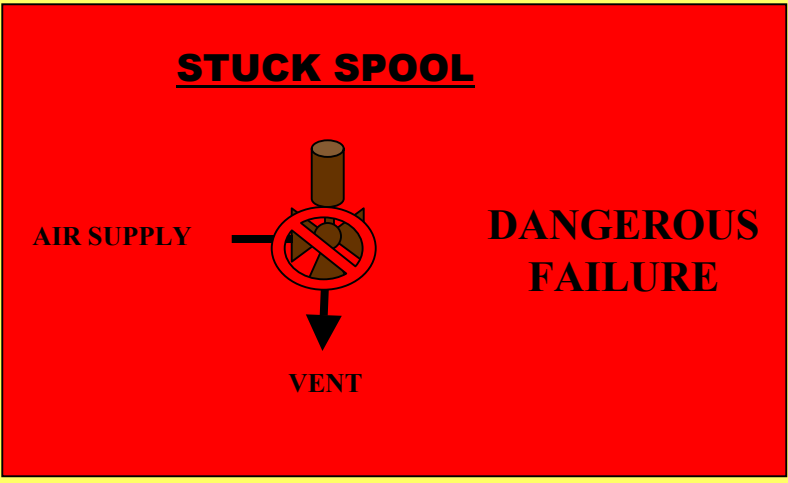
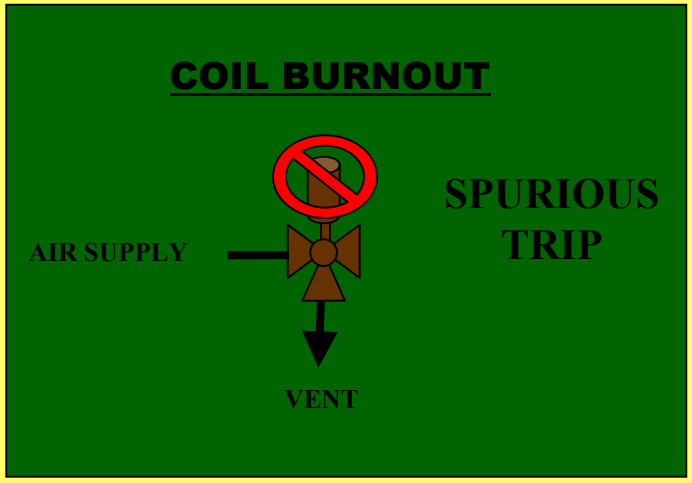
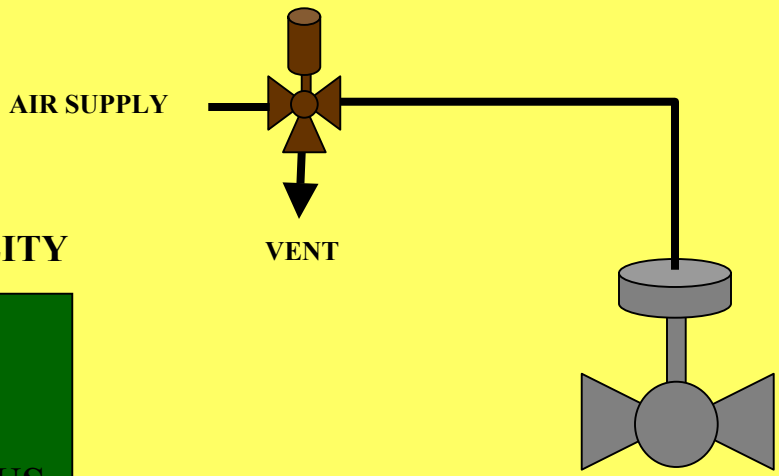
MEANS: THE ABILITY TO KEEP THE VALVE OPEN

## **HIGH SAFETY AVAILABILITY**

MEANS: THE ABILITY TO CLOSE THE VALVE

# 1oo1 SOV

**THE ISSUE IS:**  
 LOW OPERATIONAL AVAILABILITY

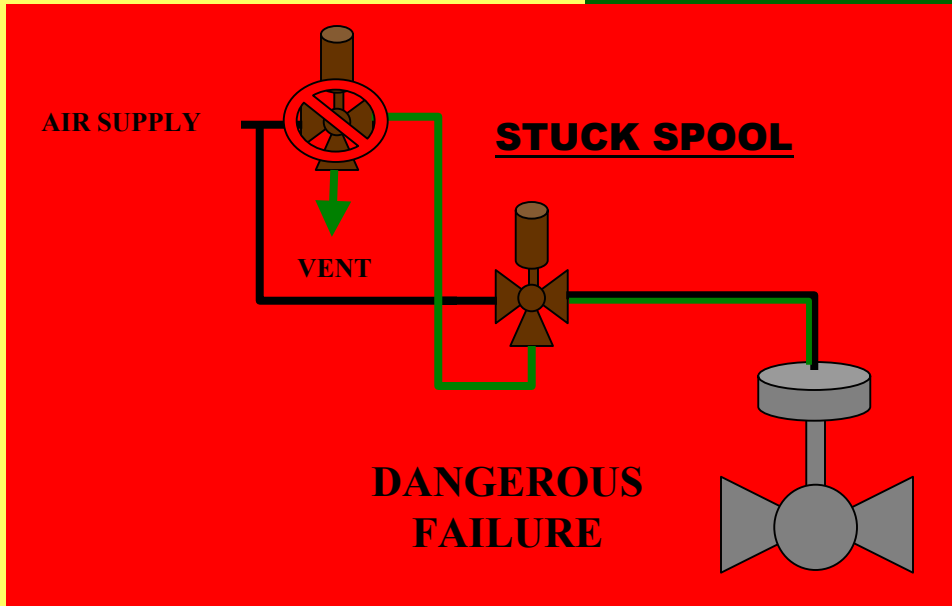
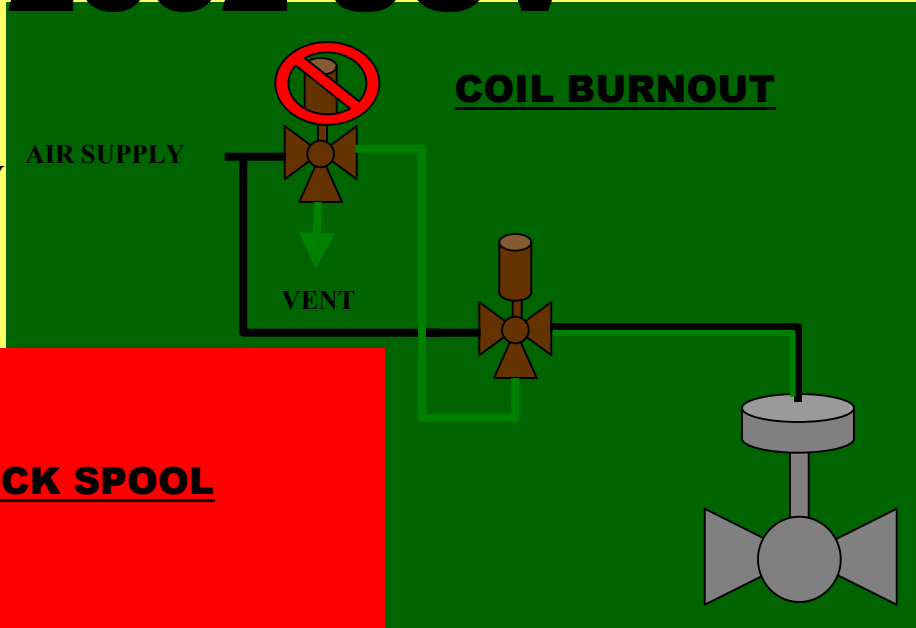


**THE ISSUE IS:**  
 LOW SAFETY AVAILABILITY

**SILstroke-3 --A FAULT TOLERANT "PST" SOLUTION**

# GENERIC 2oo2 SOV

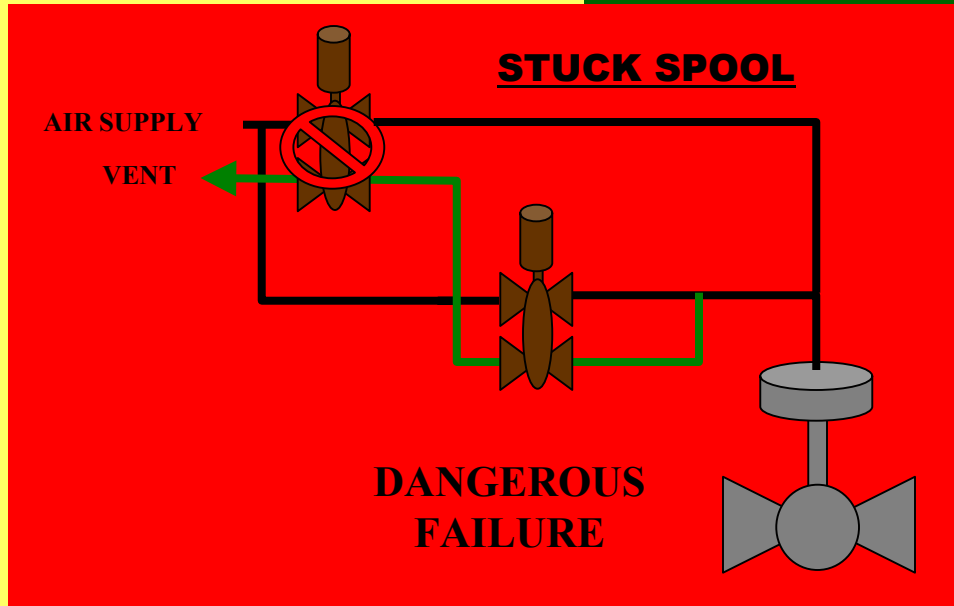
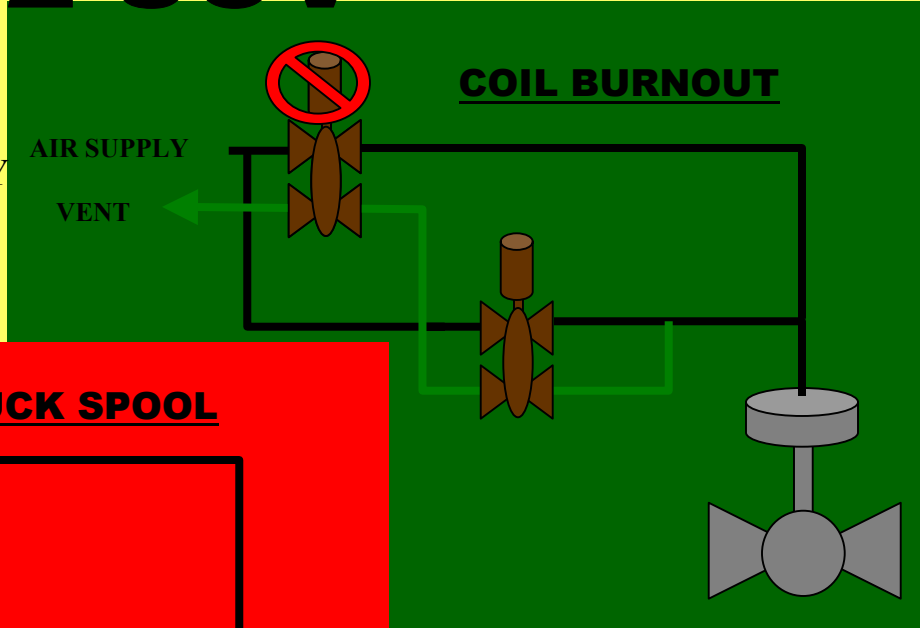
**THE BENEFIT IS:**  
OPERATIONAL AVAILABILITY



**THE ISSUE IS:**  
LOW SAFETY AVAILABILITY

# ASCO 2002 SOV

**THE BENEFIT IS:**  
OPERATIONAL AVAILABILITY



**THE ISSUE IS:**  
LOW SAFETY AVAILABILITY

# SUPPLY & VENTING INTEGRITY

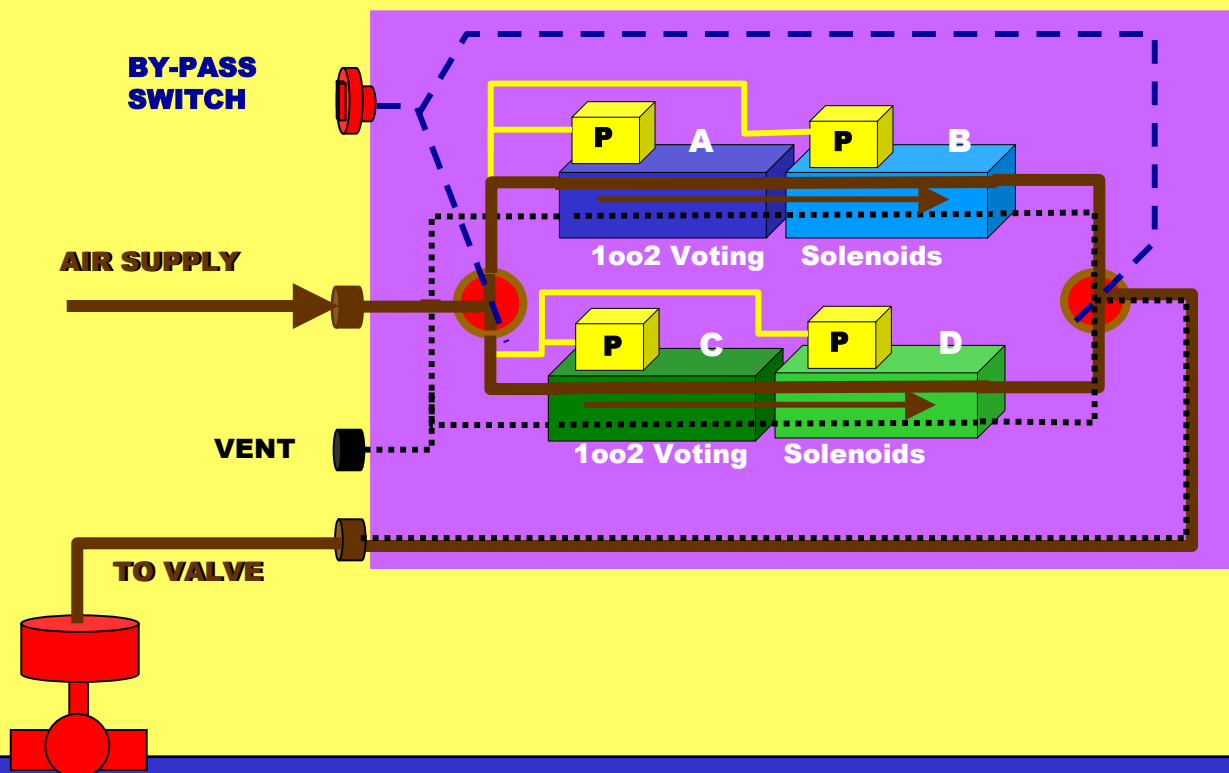
**SPSI**  
•SERVICES  
•PRODUCTS  
•SYSTEMS  
•INTEGRITY

## NO SINGLE POINT OF FAILURE

TWO PARALLEL PATHS

- REDUNDANT PATHS – A & B (or) C & D  
A & B and C & D

## FAULT TOLERANT AIR SUPPLY



**SPSI**  
•SERVICES  
•PRODUCTS  
•SYSTEMS  
•INTEGRITY

**SILstroke-3 --A FAULT TOLERANT "PST" SOLUTION**

# SUPPLY & VENTING INTEGRITY

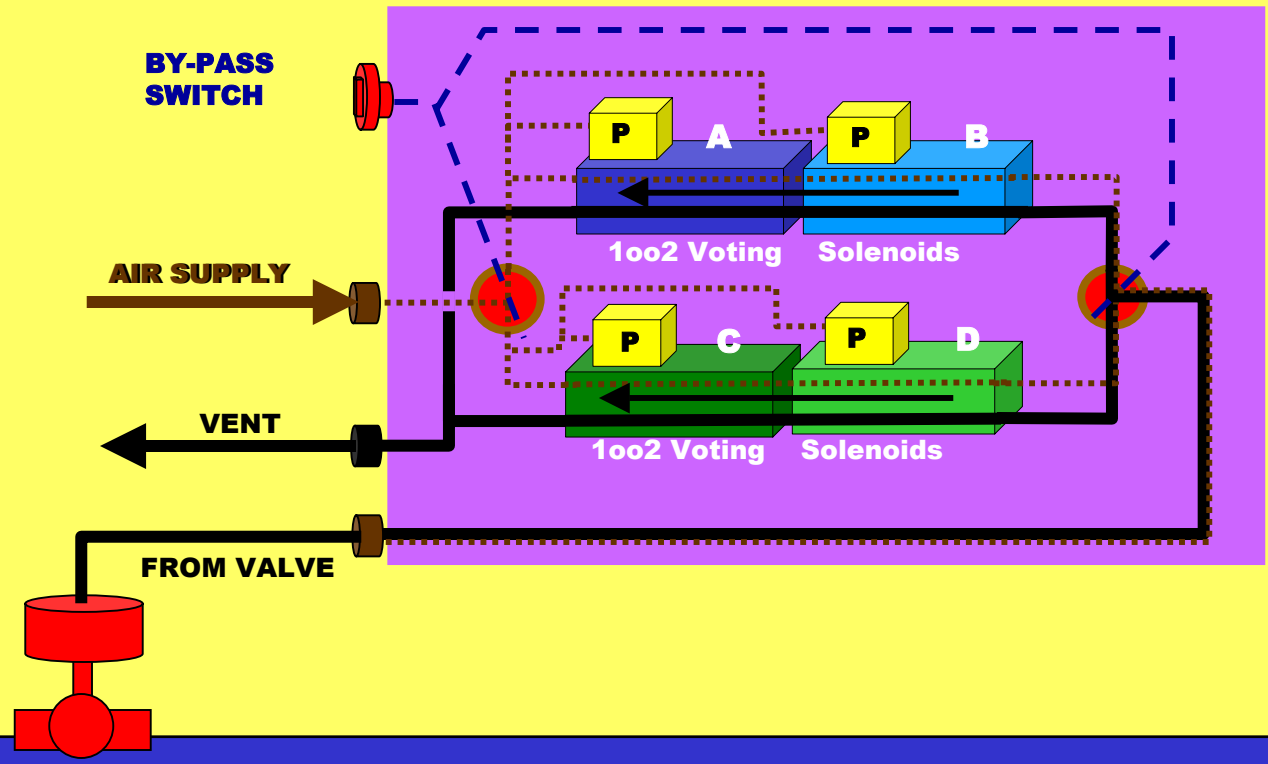
**SPSI**  
•SERVICES  
•PRODUCTS  
•SYSTEMS  
•INTEGRITY

## NO SINGLE POINT OF FAILURE

TWO PARALLEL PATHS

- REDUNDANT PATHS – A & B (or) C & D  
A & B and C & D

## FAULT TOLERANT VENTING



**SPSI**  
•SERVICES  
•PRODUCTS  
•SYSTEMS  
•INTEGRITY

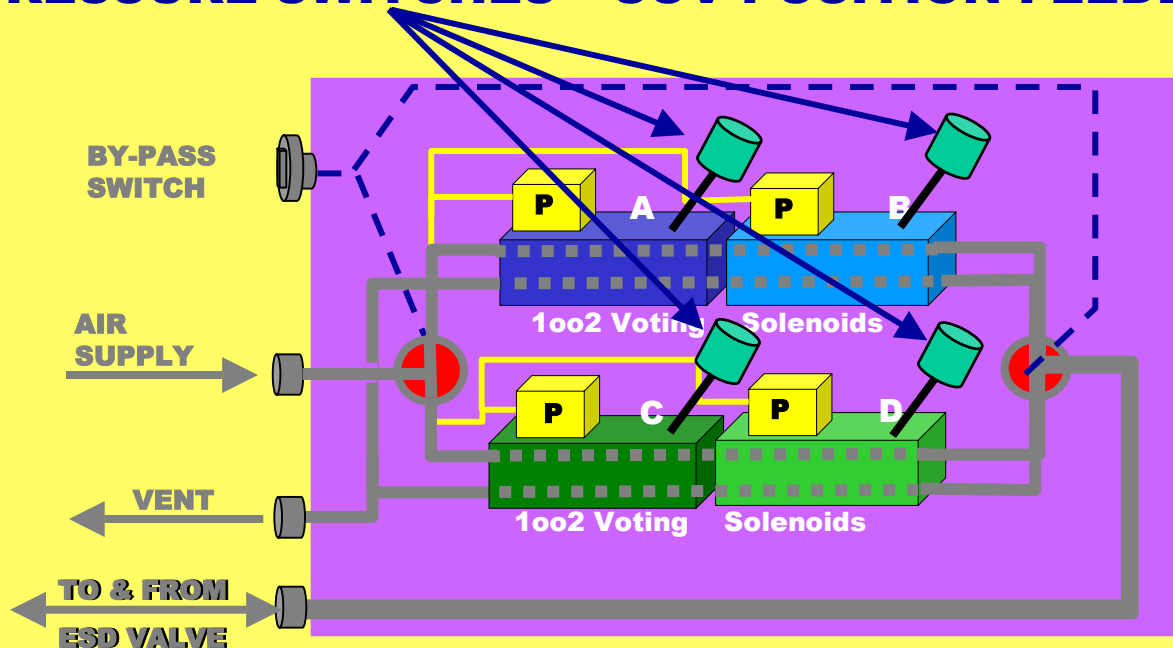
**SILstroke-3 --A FAULT TOLERANT "PST" SOLUTION**

# SPOOL FAILURE

## DETECTING SPOOL FAILURES

- EACH SOV HAS A **PRESSURE SWITCH** PLACED WITHIN ITS BODY TO DETECT ACTUAL SPOOL MOVEMENT WHEN DE-ENERGIZED.

### PRESSURE SWITCHES – SOV POSITION FEEDBACK





# SIF RELIABILITY NUMBERS

## ANSI/ISA S84 – SAFETY LOOP

### TECHNOLOGY COMPARISONS

	POSITIONERS	ASCO 2oo2D	SILstroke-3
PLUGGED NOZZLE	☹☹☹☹	☺	☺
FAIL SOV - CLOSE	☹	☺	☺
FAIL SOV - OPEN	☹☹	☹☹☹☹	☺
<1.0 Cv RATING	☹☹	☹	☺☺☺☺
FAULT TOLERANT	☹☹	☹☹	☺☺☺☺
ON-LINE REPAIR	☹☹	☹☹	☺☺☺☺
LOCAL TESTING	☹	☹	☺☺☺☺
LOCAL LIGHTS	☹	☹	☺☺
TEST 1 <sup>ST</sup> – PST 2 <sup>ND</sup>	☹	☹	☺☺☺☺

**SILstroke-3 --A FAULT TOLERANT “PST” SOLUTION**